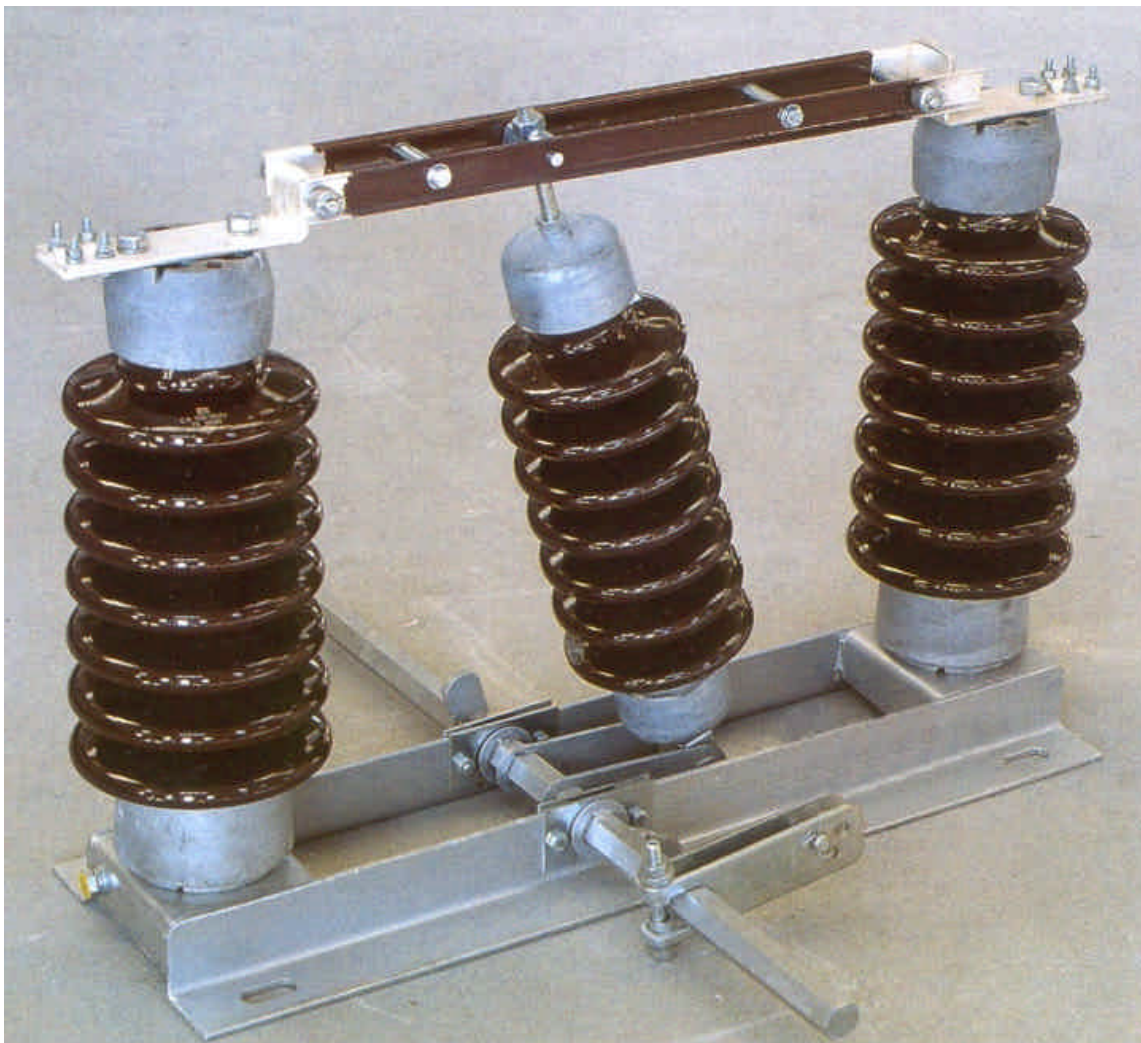


MICROELETTRICA SCIENTIFICA  
M.S. RESISTANCES

M.S. RESISTANCES S.A.S  
Z.I. du coin - Rue du Crêt de la Perdrix  
42400 St CHAMOND / France  
Tel : +33 477 29 39 80  
Fax : +33 477 29 39 89

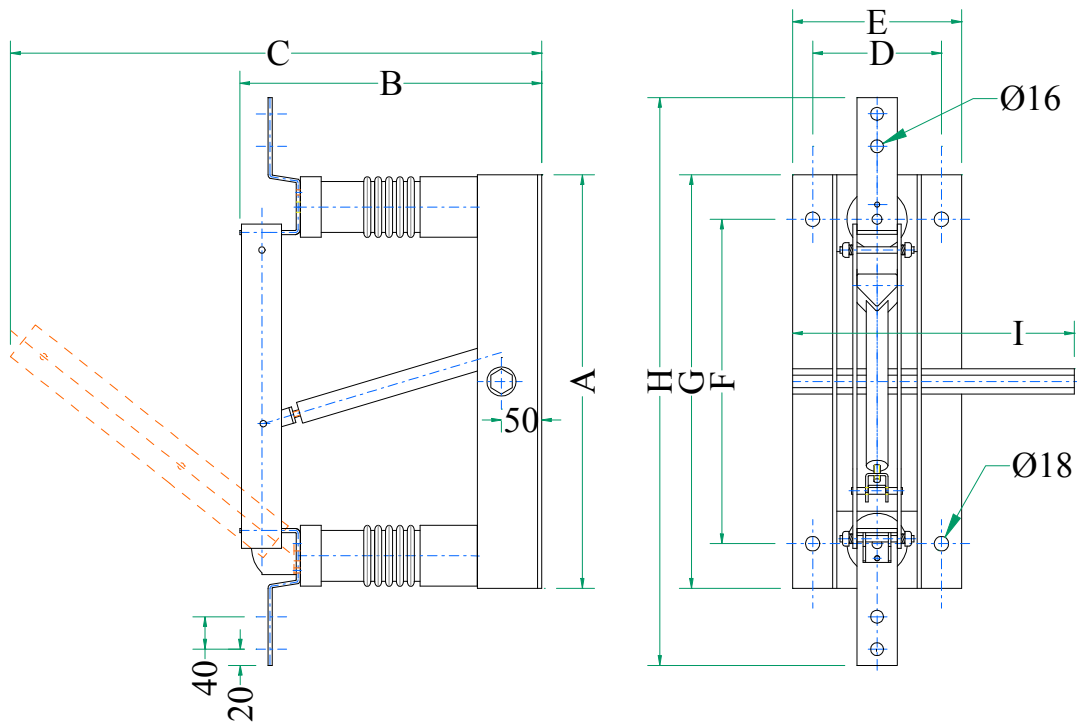
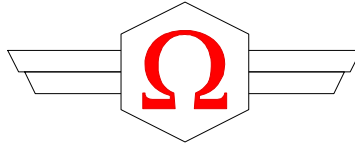
E-Mail: [Sales@msresistances.com](mailto:Sales@msresistances.com)

## SINGLE-POLE OUTDOOR DISCONNECTOR



- ✓ *Designed to allow both vertical and horizontal mounting*
- ✓ *The twin sectioning blades and terminals are made of electrolytic copper. Terminals and contact surfaces of blades are silver plated.*
- ✓ *The framework is made of 5mm steel and electro-galvanized or hot dip galvanized*

*M.S. RESISTANCES reserves all rights in this document and in the information contained therein. Any data contained therein may be changed without further notice. Reproduction, use or disclosure to third parties without express authority is strictly forbidden*



### ELECTRICAL DATA

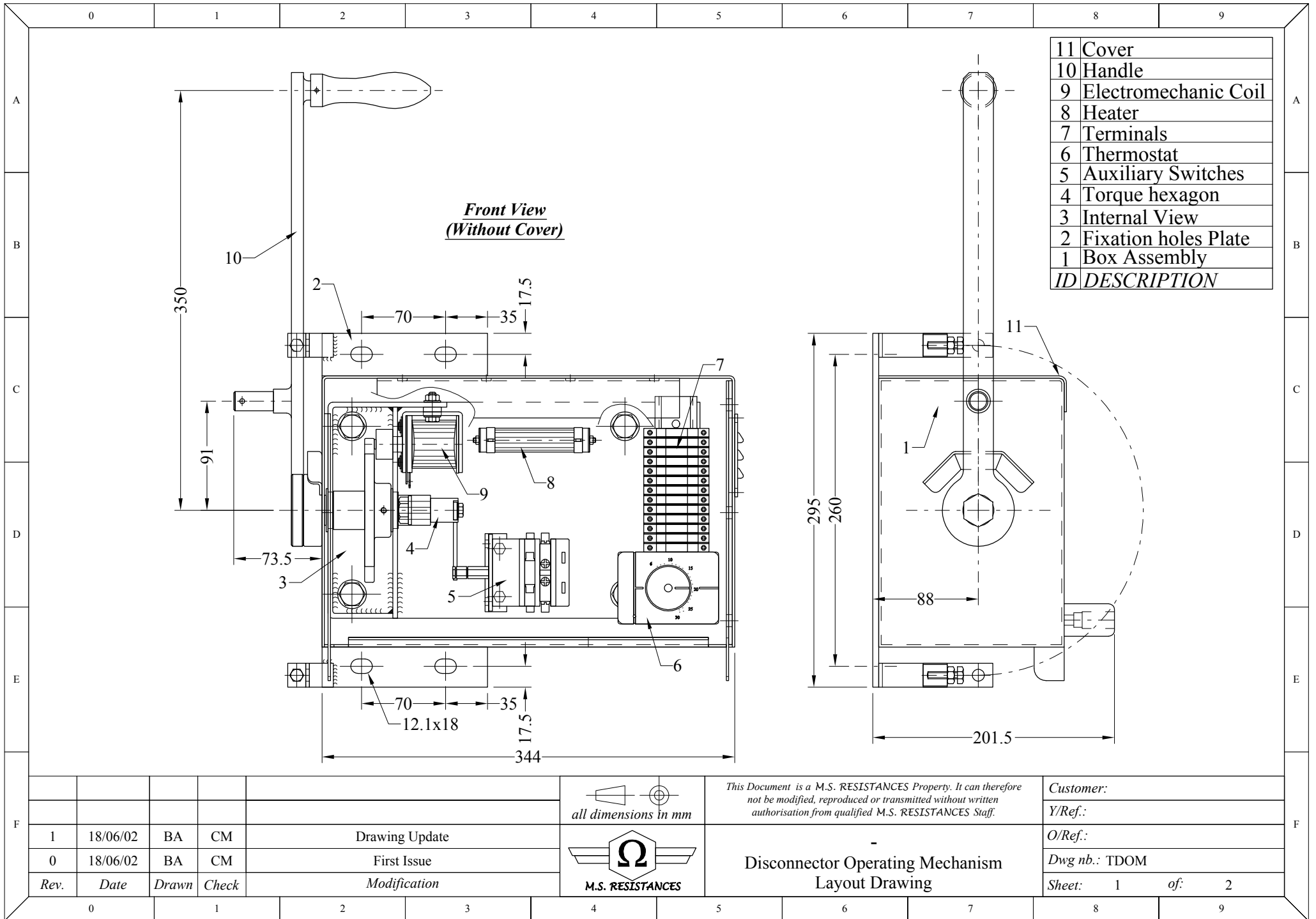
Type	Rated Voltage (kV)	Rated Current (A)	Short-Time Current (kA / 3sec)
SPOD-12	12 kV	630 or 1250	20, 25 or 31.5 kA/3sec
SPOD-17	17.5 kV		
SPOD-24	24 kV		
SPOD-36	36 kV		

### MECHANICAL DATA

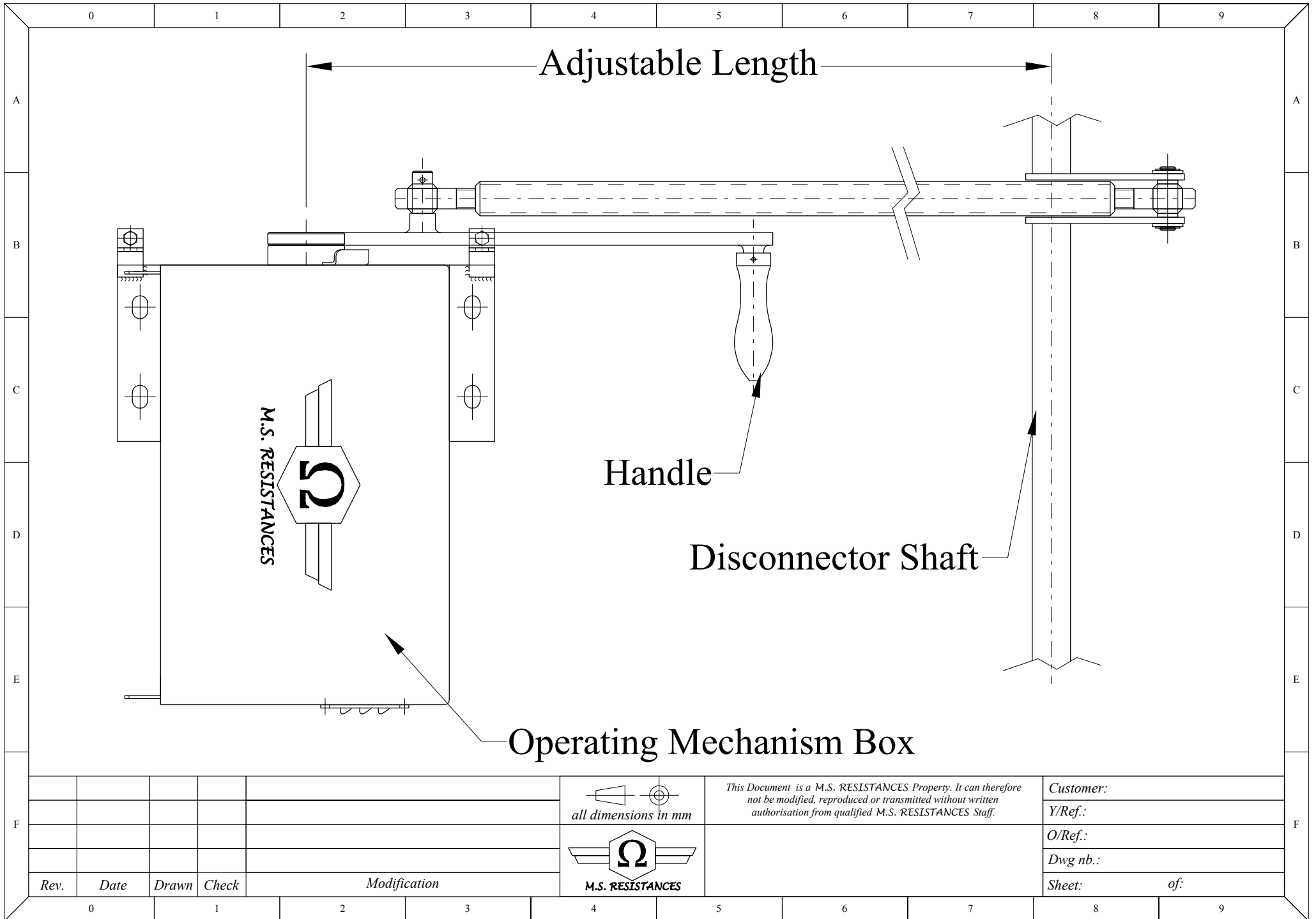
Type	Dimensions (mm)									Weight (kg)
	A	B	C	D	E	F	G	H	I*	
SPOD-12	560	280	540	210	260	450	560	780	450	29
SPOD-17	670	325	620	210	260	660	770	920	660	35
SPOD-24	840	370	770	210	260	730	840	1030	730	44
SPOD-36	910	515	970	210	260	800	910	1100	800	50

### OPTIONS

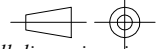
- ✓ *Operating Mechanism Box including on demand:*
  - ↪ *Auxiliary Contacts Block (up to 12 N.O. & 12 N.C.)*
  - ↪ *Motorized Operation (48...110V<sub>dc</sub> / 220V<sub>ac</sub>)*
  - ↪ *Electromagnetic Interlock (48...110V<sub>dc</sub> / 220V<sub>ac</sub>)*




1	18/06/02	BA	CM	Drawing Update
0	18/06/02	BA	CM	First Issue
Rev.	Date	Drawn	Check	Modification



Rev.	Date	Drawn	Check	Modification
0				
1				
2				
3				

  
 all dimensions in mm

  
 M.S. RESISTANCES

*This Document is a M.S. RESISTANCES Property. It can therefore not be modified, reproduced or transmitted without written authorisation from qualified M.S. RESISTANCES Staff.*

Customer:

Y/Ref.:

O/Ref.:

Dwg nb.:

Sheet: of: