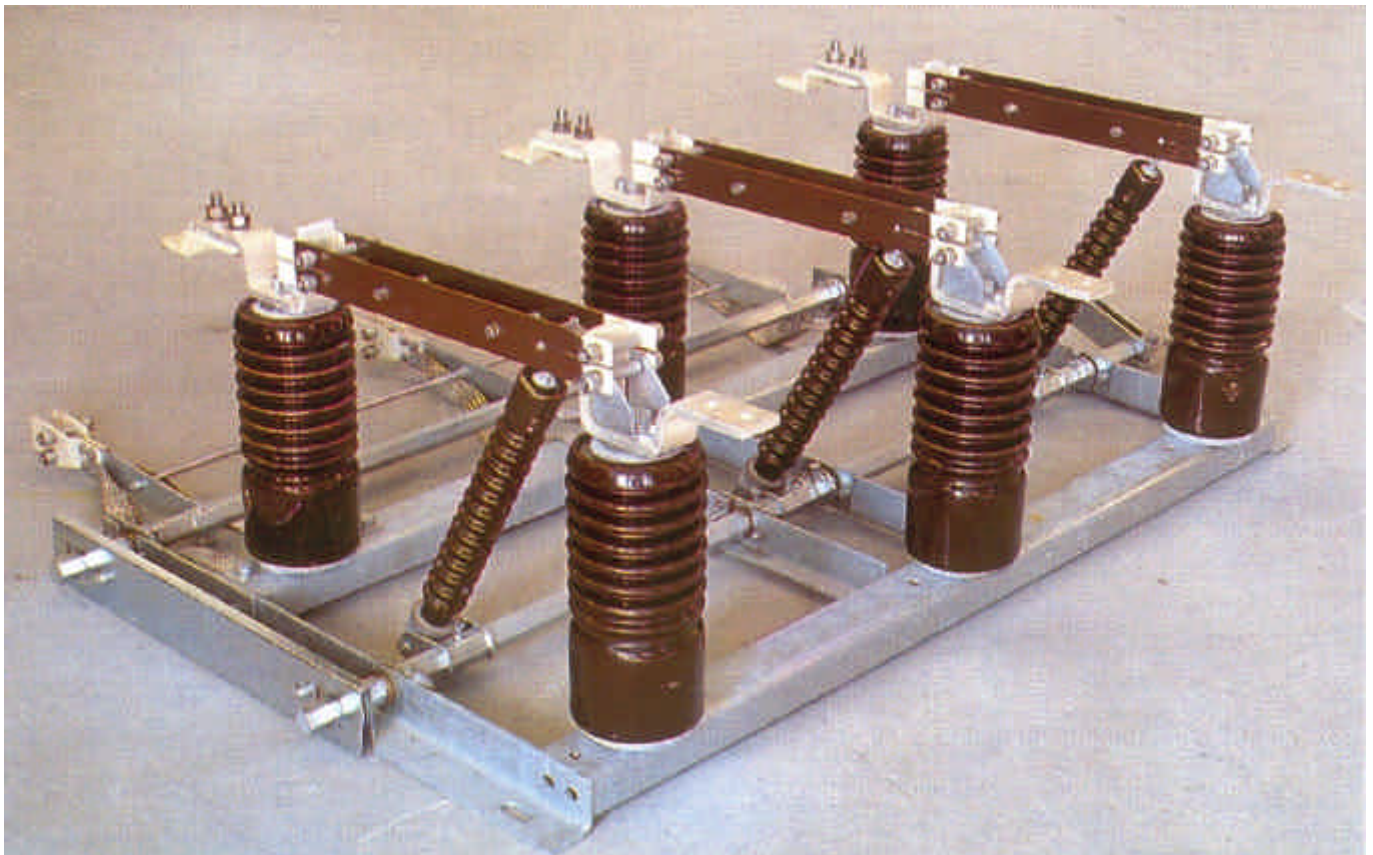


MICROELETTRICA SCIENTIFICA
M.S. RESISTANCES

M.S. RESISTANCES S.A.S
Z.I. du coin - Rue du Crêt de la Perdrix
42400 St CHAMOND / France
Tel : +33 477 29 39 80
Fax : +33 477 29 39 89

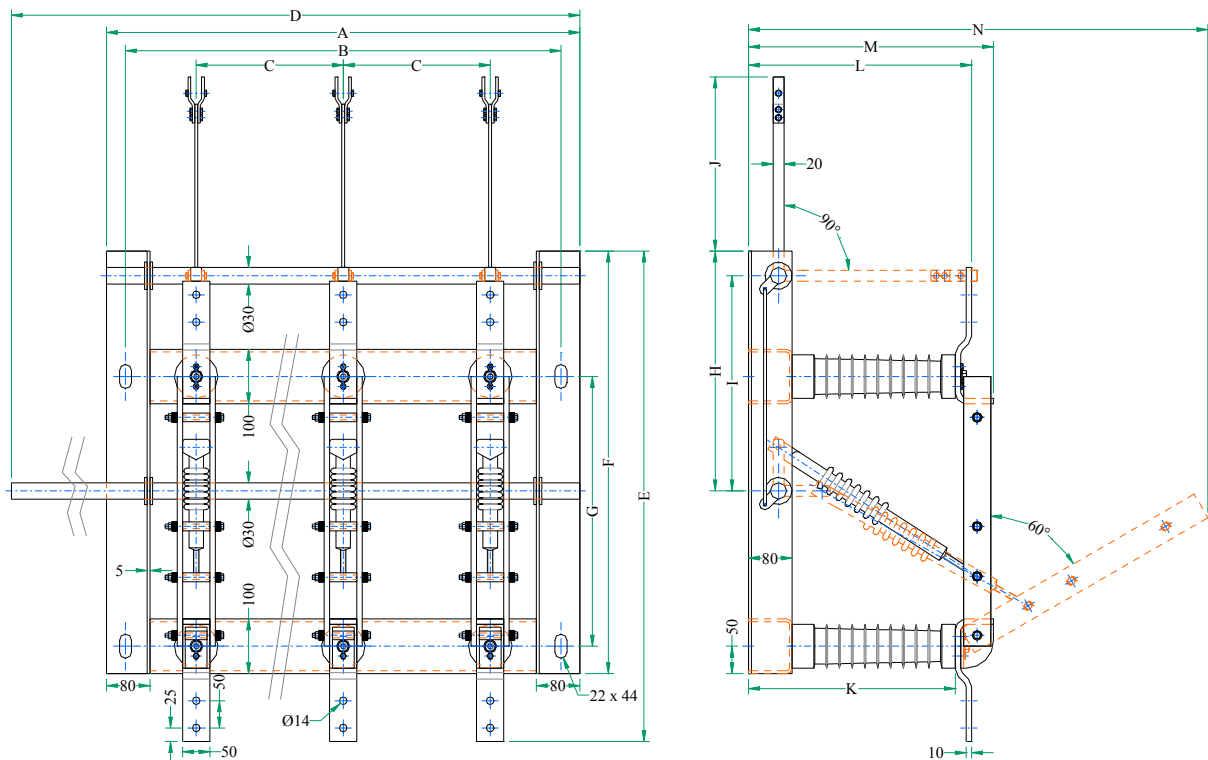
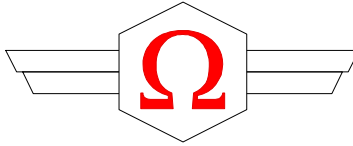
E-Mail: Sales@msresistances.com

THREE-POLE OUTDOOR DISCONNECTOR C/W EARTHING SWITCH



- ✓ *Designed to allow both vertical and horizontal mounting*
- ✓ *The twin sectioning blades and terminals are made of electrolytic copper. Terminals and contact surfaces of blades are silver plated.*
- ✓ *The framework is made of 5mm steel and electro-galvanized or hot dip galvanized*

M.S. RESISTANCES reserves all rights in this document and in the information contained therein. Any data contained therein may be changed without further notice. Reproduction, use or disclosure to third parties without express authority is strictly forbidden



ELECTRICAL DATA

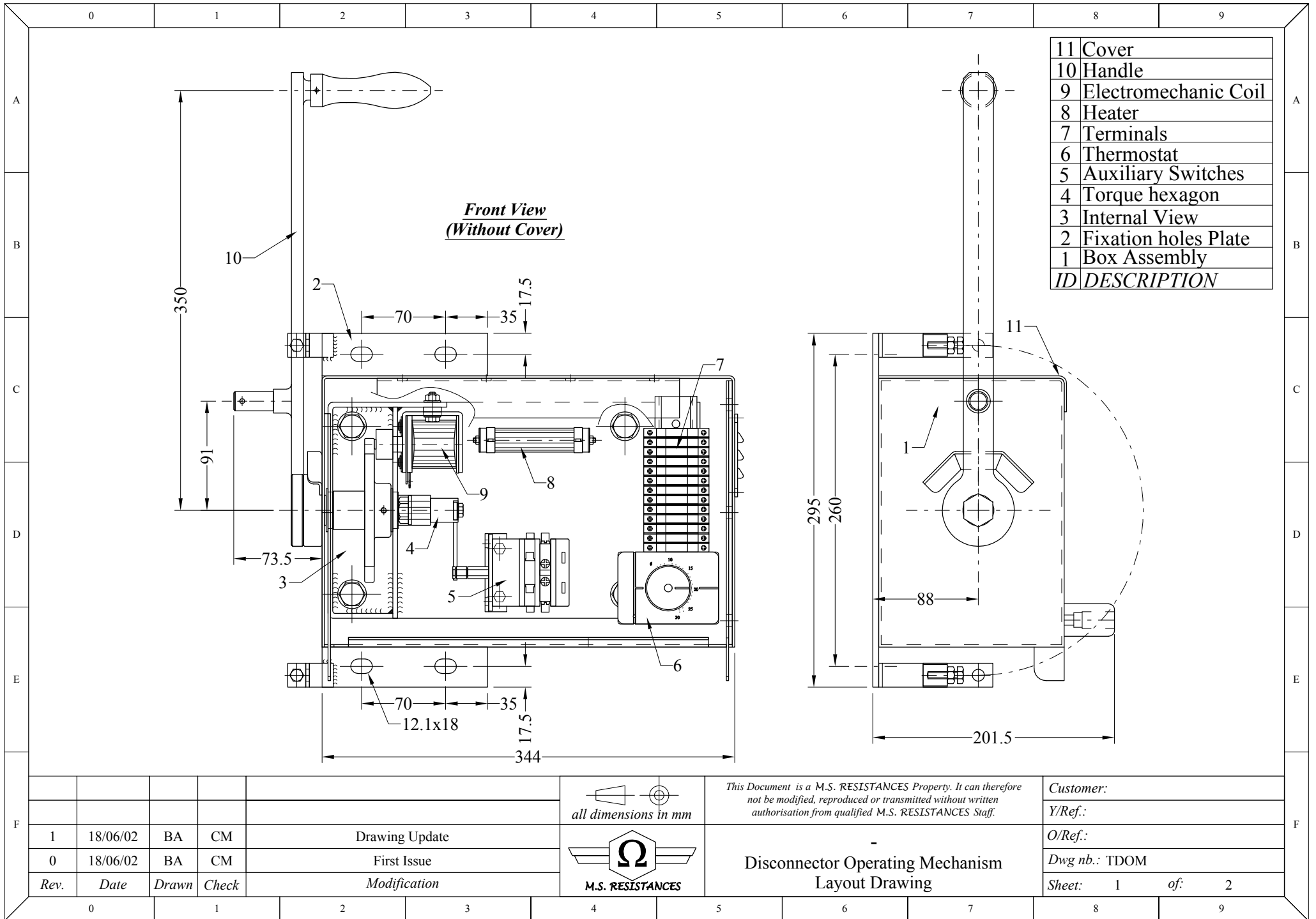
Type	Rated Voltage (kV)	Rated Current (A)	Short-Time Current (kA / 3sec)
TPODES-12	12 kV	630 or 1250	20, 25 or 31.5 kA/3sec
TPODES-24	24 kV		
TPODES-36	36 kV		

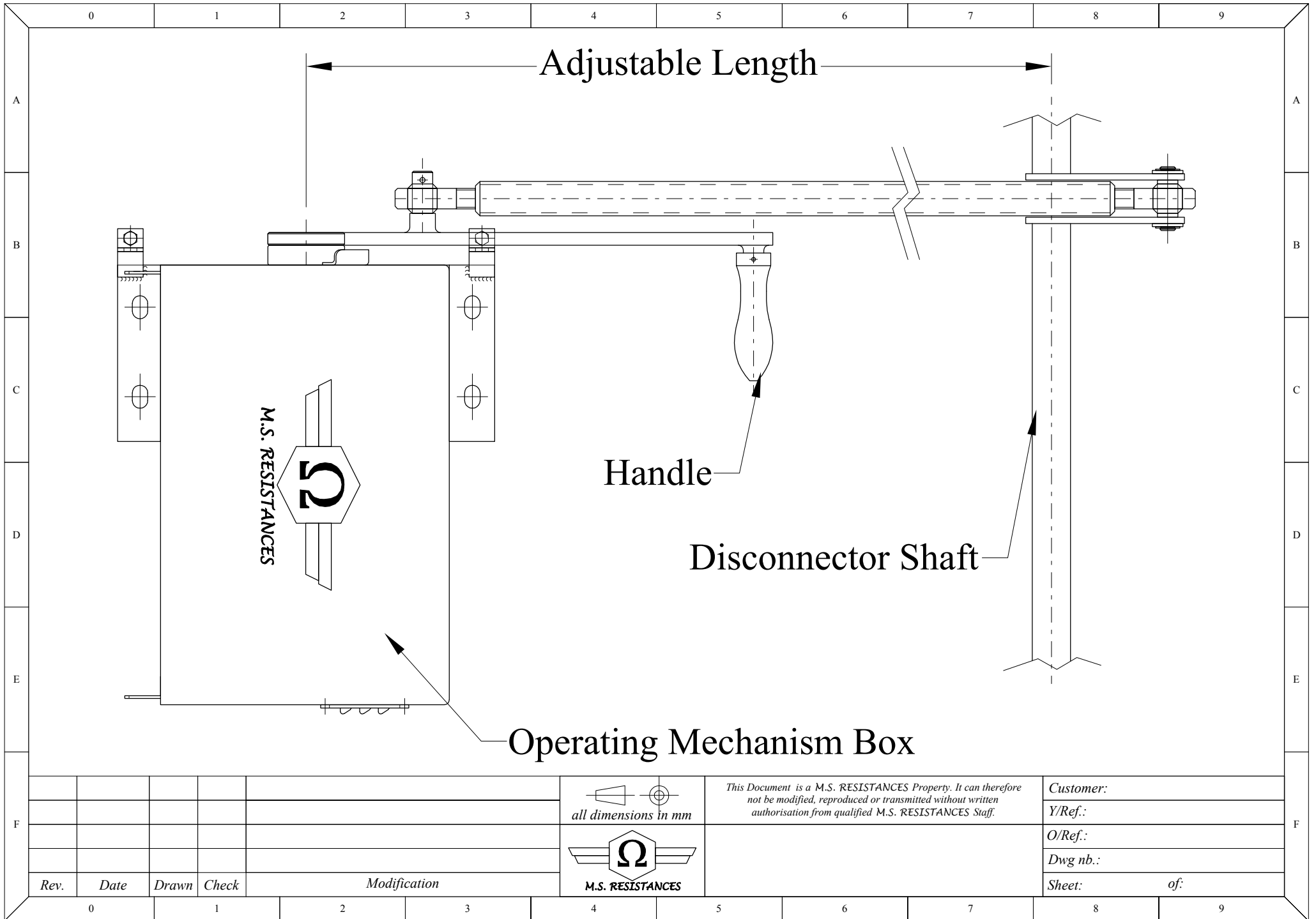
MECHANICAL DATA

Type	Dimensions (mm)														Weight (kG)
	A	B	C	D	E	F	G	H	I	J	K	L	M	N	
TPODES-12	1065	995	400	1350	815	690	410	425	380	150	210	240	280	600	92
TPODES-24	1260	1190	500	1630	1025	900	620	632	587	230	290	320	360	860	125
TPODES-36	1520	1450	630	1720	1085	960	680	660	615	320	380	410	450	1000	157

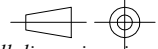
OPTIONS


- ✓ Fuse along with Fuse holder
- ✓ Operating Mechanism Box including on demand:
 - ↪ Auxiliary Contacts Block (up to 12 N.O. & 12 N.C.)
 - ↪ Motorized Operation (48...110V_{dc} / 220V_{ac})
 - ↪ Electromagnetic Interlock (48...110V_{dc} / 220V_{ac})





Rev.	Date	Drawn	Check	Modification
0				
1				
2				
3				


 all dimensions in mm


 M.S. RESISTANCES

This Document is a M.S. RESISTANCES Property. It can therefore not be modified, reproduced or transmitted without written authorisation from qualified M.S. RESISTANCES Staff.

Customer:

Y/Ref.:

O/Ref.:

Dwg nb.:

Sheet: of: